

# HI-TECH ELEVATOR

Our Range of Elevators Hi-Tech Deals in 5,6,8,10,13 and 15 passengers Lifts with Manual or automatic doors in single for two speed operation for Residential and commercial buildings. Stretcher Lifts with L5 passenger's capacity for Hospitals and goods lifts up to 2000 Kgs. Capacity for factors, industries and textile market.

While planning a new building kindly call Hi-Tech elevator for a complete discussion for lifts requirement so that our optimum solution will be arrived right at the design state.

## LOAD CAPACITY & DIMENSIONS OF MANUALLY DOOR OPERATION PASSENGER LIFT SPEED 0.70 M.P.S.

| Load   |     | Platform Outside |      | Lift Well Finished |      | Entrance |      |                         | Pit Finished | Over Head | Machine Room |            |       |
|--------|-----|------------------|------|--------------------|------|----------|------|-------------------------|--------------|-----------|--------------|------------|-------|
| Person | kg. | A                | B    | C                  | D    | E        | Q    | Type                    | P            | OH        | J            | K          | L     |
| 5      | 340 | 1250             | 950  | 1700               | 1300 | 1200     | 2400 | Imperforated Swing Door | 1600         | 4900      | 750+C+750    | 750+D+1650 | 2400  |
| 6      | 408 | 1250             | 1100 | 1700               | 1450 | 1200     | 2400 | -Do-                    | 1600         | 4900      | 750+C+750    | 750+D+1650 | 2400. |
| 8      | 544 | 1550             | 1200 | 1950               | 1550 | 1200     | 2400 | -Do-                    | 1600         | 4900      | 750+C+750    | 750+D+1650 | 2400  |
| 13     | 884 | 1900             | 1500 | 2400               | 1850 | 1200     | 2400 | Collapsible             | 1600         | 4900      | 750+C+750    | 750+D+1650 | 2400  |

## DUAL SPEED FULL COLLECTIVE AUTOMATIC PASSANGER ELEVATOR SPEED 1.00 M.P.S.

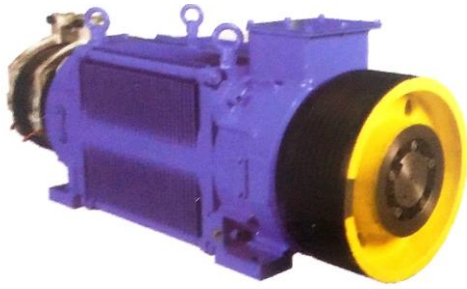
| Load   |     | Platform Outside |      | Lift Well Finished |      | Entrance |      |                             | Pit Finished | Over Head | Machine Room |           |      |
|--------|-----|------------------|------|--------------------|------|----------|------|-----------------------------|--------------|-----------|--------------|-----------|------|
| Person | kg. | A                | B    | C                  | D    | E        | Q    | Type                        | P            | OH        | J            | K         | L    |
| 8      | 544 | 1550             | 1200 | 2000               | 1700 | 900      | 2100 | Automatic Centre Open Doors | 1600         | 4900      | 900+C+200    | 750+D+200 | 2400 |
| 13     | 884 | 1900             | 1500 | 2400               | 2000 | 900      | 2100 | -Do-                        | 1600         | 4900      | 900+C+200    | 750+D+200 | 2400 |

## LOAD CAPACITY & DIMENSIONS OF MANUALLY DOOR OPERATION STRETCHER LIFT SPEED 0.4/0.55 M.P.S.

| Load     |      | Platform Outside |      | Lift Well Finished |      | Entrance |      |              | Pit Finished | Over Head | Machine Room |            |      |
|----------|------|------------------|------|--------------------|------|----------|------|--------------|--------------|-----------|--------------|------------|------|
| Person   | kg.  | A                | B    | C                  | D    | E        | Q    | Type         | P            | OH        | J            | K          | L    |
| 12 To 15 | 1000 | 1200             | 2300 | 1800               | 2500 | 1600     | 2400 | Imperforated | 1600         | 4900      | 900+C+900    | 750+D+1800 | 2400 |

## LOAD CAPACITY & DIMENSIONS OF MANUALLY DOOR OPERATION STRETCHER LIFT SPEED 0.4/0.7 M.P.S.

| Load         |   | Platform Outside |   | Lift Well Finished |   | Entrance |   |      | Pit Finished | Over Head | Machine Room |   |   |
|--------------|---|------------------|---|--------------------|---|----------|---|------|--------------|-----------|--------------|---|---|
| Person       | kg.   | A                | B | C                  | D | E        | Q | Type | P            | OH        | J            | K | L |
| 1000<br>2000 | The lift platform dimensions will be given as per requirement and available lift shaft. |                  |   |                    |   |          |   |      |              |           |              |   |   |



## Motor Machine Unit

### Car Operating Panel (COP)

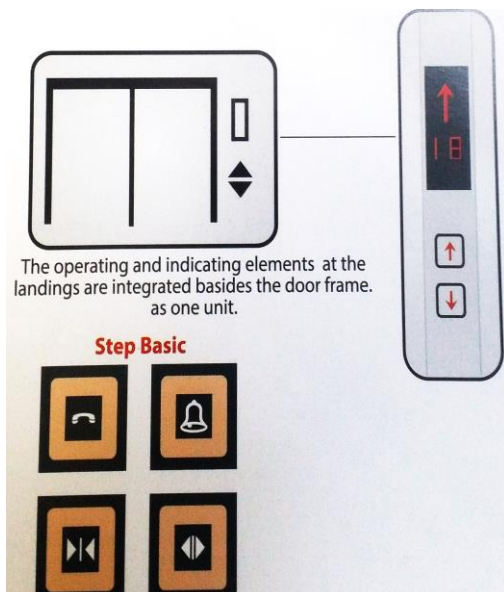
The COP comes with many designs and colour combinations, which are in harmony with the car interiors. It includes Squares Push-Button or Round Buttons with illuminated LED to provide you added visual confirmation, a digital Up/Down arrow with floor indication, and overload warning indicator an inter locking indicator to assure all the hoist was doors are closed.

### Elevator Machine:

The machines consists of a worm and a reduction gear enclosed for lift work to give ample starting torque and specially insulated to withstand tropical condition. The machine is mounted on heavy concrete beams with extensive vibration dumping properties between machine frame and supporting beams. A powerful automatic electro-mechanical Brake is arranged to work on a strong coupling between the motor and the worm gear. The Brake opens when the motor starts and comes in to operation when the current is cut off or fails for any other reason.

### Safety Gear:

The Safety Gear consists of steel-rods connected to spring by cross shaft and levers. The work on the guides by side pressure as soon as they are even slightly lifted and have come in contact with the guides. The Safety Gear is activated if any of the hoisting ropes fail, incase of unequal stretching of the ropes or when the downwards speed of the car exceeds a prearranged limit by the action of the speed governor.



### Compact Indicating/ Operating Element

The car indicator display all the information in one unit. The operating elements in the elevator car allows individual solutions for the arrangement of push buttons and operating elements.

#### Step Silver



# CONTROL PANEL

## V3 F Drive

Jerkless starting & Stopping are achieved irrespective of load precise leveling accuracy.

---

Stopping of elevator is done by perfect electrical braking unit for minimizing for mechanical wear & tear & maintenance free performance forever.

---

High starting torque characteristic.

---

With the use of **HI-TECH** special Bed late assembly, noise & vibration can be reduced to a great extent.

---

Reduction in the wear & tear of mechanical part due to smooth acceleration & deceleration.

---

Higher energy-saving by lower starting current, lower energy consumption & higher power factor (Up to 0.95) features.

---

Different parameters like current, torques speed, acceleration time & deceleration time can be easily viewed, monitored and controlled on interactive panel.

---

Combination of Micro Processor Control and PWM technology in elevator guarantees long lasting life and low maintenance.

## Microprocessor Controller:

Microprocessor technology in the field of lifts ensures greater reliability, improves traffic control and makes troubleshooting easier and quicker. Several in-built features improve the quality of elevator system and makes the entire operation more flexible. Sophisticated in-built software offers faster response of the system resulting in shorter waiting time and higher traffic handling.

## Down Collective Control:

In this system the lift has one call button at each landing and the controller memorizes all car and landing calls. The car calls are answered in both directions of travel while landing calls are answered serially during descent. This provides faster access in the downward direction of travel for passengers at landings and reduces random travel of the lift, there is a significant reduction in power consumption and passenger waiting times.

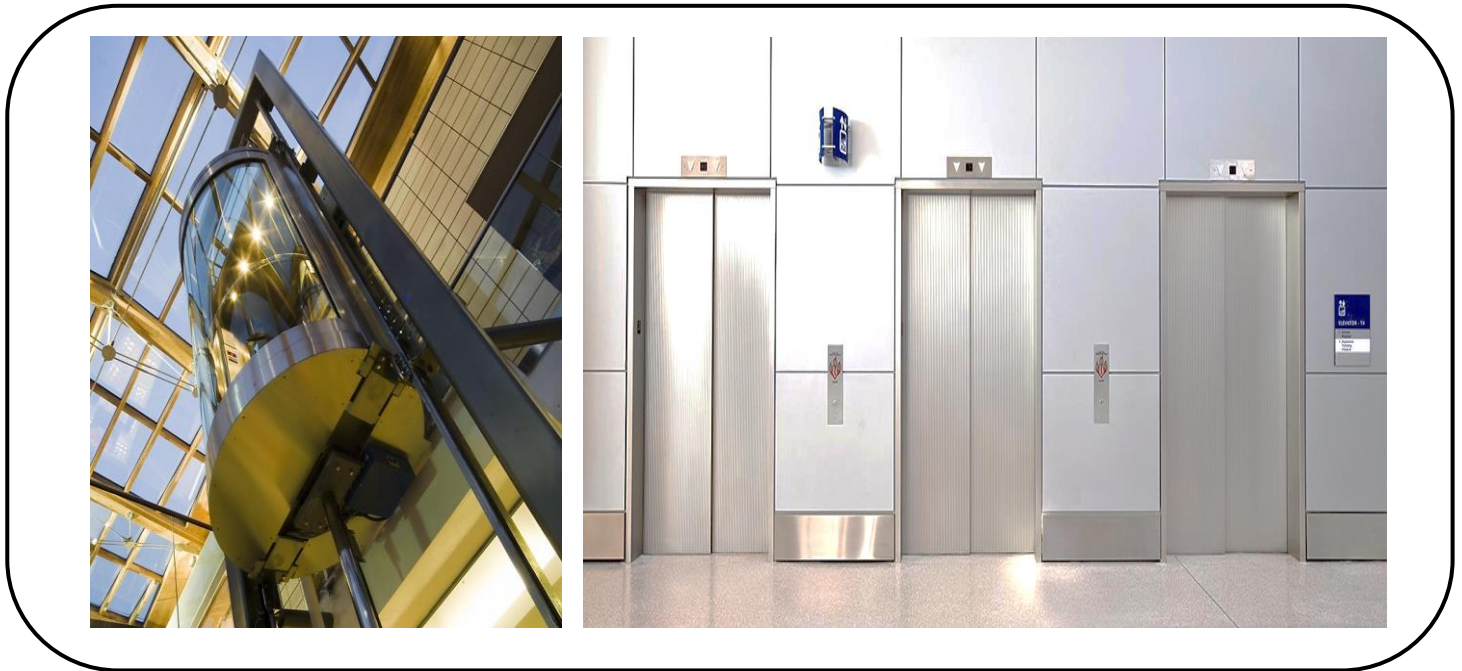
## Control unit:

Eye- Catching exterior and dazzling interior of observation elevator adds Glorious look to your commercial Premises Theatres, Departmental Stores & Residential Premises where delicacy luxury cannot be compromised.



## About Hi-Tech Elevator

We take this opportunity to introduce ourselves as the one Elevator firm where you get the value for your money to the fullest. Hi-tech Elevator believes one should never stop listening & teaching, qualities which make a perfect industry. We offer New Elevator installation & upgrades. Preventive Maintenance programmes. Modernisation and repair services. Our Clientele includes Major Hospitals, High-rise offices and Apartment Complexes. Corporate head quarters and retail establishments. Hi-Tech prides itself on their unsurpassed Superior Quality, excellent Flexibility when it comes to catering and designing products and providing after sales services to our customer.



## Mission Statement

To provide reliable and responsive elevator services at fair price and to give customers peace of mind when it comes to safety and the comfort of the elevator riders.

## Car Ceiling

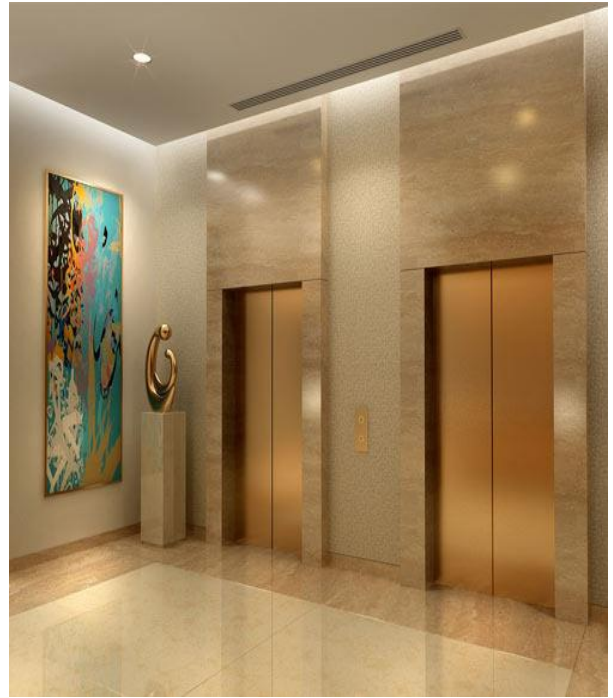
- **HANDRAILS**  
Handrails create an individual note and give more Convenience.
- **CEILING**  
Wooden with white lamination, steel painted with white colour, S. S., Metal, Gypsum Board/modular panel/Spot Light/ Fiber Light (False Ceiling-optional).
- **Flooring**  
Granite Flooring, PVC tiles, Rubber/coir Mat, Aluminum Chequered Plate, Marble, Granite, Wooden.

- **Car Body Work**

The passenger lift car decorated keeping flexibility of elegant design, finished and various colour combinations of the respective Wooden/M.S./S.S/ColouredSS/Bronze/Brass/Aluminum/Paiting/Gold Plating/Natural/Hair Line/Mirror Finish/Etched cabin.

- **Mirror**

Covering full width and half height of the rear wall with a choice of plain white or tinted grey.



## Passenger Elevator

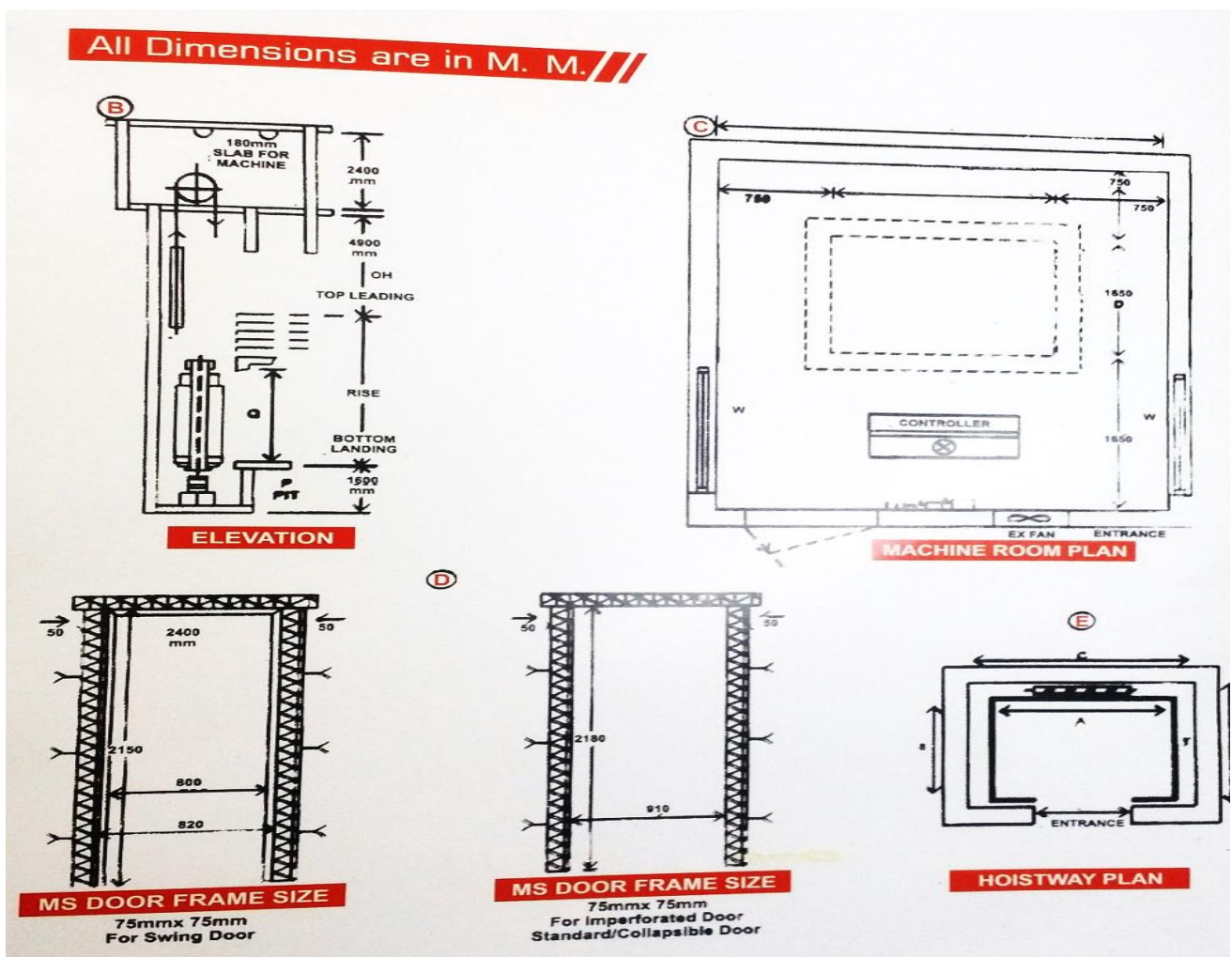
Hi-Tech offers modern technology based Quality passenger elevator with minimum brake down calls shorter waiting time & downtime. Hi-Tech engineer elevator reflect the feature of safe operation, eco efficiency and practical low energy consumption with the introduction of VVVF technology.

## VVF Elevator

Hi-Tech has been installing and servicing elevators for more than a decade HI-Tech bring Millenium most advanced energy saving WF elevator system with highly sophisticated Microprocessor based pulse width Modulation (PWM) technology Hi-Tech complete integrated VVVF control system ensure that best returns of cost.

## Door

According to customer requirements we provide imperforated, Collapsible Swing Door power coated or Anodised Aluminum Telescopic doors and coloured MS/SS Auto doors.



## NOTE FOR OWNER'S WORK

All civil works such as chipping of rack bolt holes hall button fixture holes and crouting of the same Front entrance wall At ground floor must be left unerected until elcon pre-assembled car frame etc. installed Power supply 400 Volts, 50cps and 230 Volts, 50 CPS should be arranged in the machine room.

Other Works As Explained In Our Contract.

### **Service & Maintenance**

Hi-Tech has a pool of highly talented, skilled, qualified, well-trained and well-experienced technical personnel for Servicing and Maintenance of Lifts. We believe the key to safe and reliable elevator performance is regularly scheduled by preventive maintenance visits, performed by skilled elevator technical. Then add to that the rapid response in emergency situations and a fair price of the service, for the best value the industry today.

### **Customer Focus**

Aiming to achieve total customer satisfaction by quality products at affordable prices. Hi-Tech emphasizes on quality material confirming to standard laid-down in product brochure. Hi-tech is aware of the challenges involved in the increasing competitiveness in the sector, and as such we provide personalized services, flexibility and simple solutions to complex problems. Hence Hi-tech adopts new devices, functions and methods to continually improve the performance of products. Hi-Tech also make effective utilization of Man, Material and Machine so as to improve productivity and achieve cost reduction.

## **Our Address**

**HEAD OFFICE :** Aman Palace, Old Purulia Road, Zakirnagar, Mango, Jamshedpur, Jharkhand (India) , Pincode: 832110

**MOBILE :** +91-9523418859, +91-9006727193

---

**BRANCH OFFICE :** 302, Hideout Apartment, Kalarahanga, Khurda, Bhubaneswar, Odisha, India  
Pincode : 751024

**MOBILE :** +91-8789781001, +91-8797020860

---

**BRANCH OFFICE :** 103 , Hitech Elevators, New Rajendra Nagar, Near Sri Sai Ram Hospital, Raipur, Chhattisgarh (India)

**MOBILE :** +91-8789781001, +91-8825364644

---